

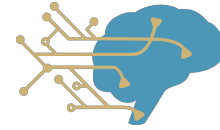


2019 Neural Computation and Engineering Connection

Thursday, January 24, 2019

CNT - Russell Hall Suite 204, 1414 NE 42nd St.

- 11:15a-12:30p Poster session and lunch (provided)
- 12:30-12:40pm Welcome: Adrienne Fairhall, Eric Shea-Brown
- 12:40-12:55pm 1-slide introductions by new UWIN and Computational Neuroscience fellows: Allie Widman, Lylah Deady, Kinsey Bice, & Laura Arjona, UWIN postdoctoral fellows; Dennis Tabuena & Ben Chasnov, Comp Neuro graduate fellows
- 12:55-1:10pm *"Subject-specific quantification and acceleration of motor learning"*
Momona Yamagami, UWIN graduate fellow, Steele and Burden labs
- 1:10-1:25pm *"Electrophysiological Correlates of Feedback Learning in Humans"*
Patrick Rice, Comp Neuro graduate fellow, Stocco lab
- 1:25-1:40pm *"Continuous long-term recording of sleep in a mouse model of epilepsy"*
Raymond Sanchez, UWIN graduate fellow, de la Iglesia lab
- 1:40-2:00pm Break
- 2:00-2:15pm *"Does the mouse see the world like an artificial neural network?"*
Iris Shi, Comp Neuro graduate fellow, Shea-Brown and Buice labs
- 2:15-2:30pm *"What do patients with retinal prostheses actually see?"*
Ezgi Yücel, UWIN graduate fellow, Fine and Rokem labs
- 2:30-2:45pm *"Concurrent measurement of olfactory information and behavior tracking during odor-guided navigation"*
Mohammad F. Tariq, UWIN graduate fellow, Gire and Perkel labs
- 2:45-3:00pm *"Investigating Neural Synchrony Within the Monkey Hippocampus"*
Aaron D. Garcia, UWIN graduate fellow, Buffalo and B. Brunton labs
- 3:00-3:20pm Break
- 3:20-4:10pm *"'He can be a normal child; he couldn't do that before.': The potential for therapy-directed neurorecovery after pediatric-onset SCI"*
Keynote lecture: Andrea Behrman, University of Louisville
- 4:10-5:10pm Ethics panel discussion: "What are our responsibilities as scientists at the interface of neuroscience, computation, and engineering?"
Chair: Adrienne Fairhall; Participants: Andrea Behrman, Michael Berry, Loren Frank, Mitra Hartmann, David Perkel, Abby Person, Maryam Shanechi, Eric Shea-Brown



2019 Neural Computation and Engineering Connection

Friday, January 25, 2019

UW Husky Union Building (HUB) Room 334

Late afternoon reception in HUB 332

- 8:45-9:15am Continental breakfast
- 9:15-9:30am Welcome and community updates: Adrienne Fairhall, Eric Shea-Brown
- Session I, Chair: Gabrielle Gutierrez
- 9:30-10:20am *"Neural Decoding and Control of Mood to Treat Neuropsychiatric Disorders"*
Keynote Lecture: Maryam Shanechi, University of Southern California
- 10:20-10:50am *"Advancing Neuroscience through Next-Generation Optical Tools"*
Andre Berndt, UW Bioengineering
- 10:50-11:10am Break
- 11:10-11:40am *"Context-Adaptive Neural Models of Language"*
Mari Ostendorf, UW Electrical & Computer Engineering
- 11:40a-12:00p *"Bioinspired multifunctional mobility"*
Tom Libby, UW Electrical and Computer Engineering & Biology
- 12:00-12:30pm *"Decoding motor control to improve movement in cerebral palsy"*
Kat Steele, UW Mechanical Engineering
- 12:30-1:30pm Lunch (provided)
- Session II, Chair: Jon Rueckemann
- 1:30-2:20pm *"Insights into cerebellar control of movement"*
Keynote Lecture: Abby Person, University of Colorado Denver
- 2:20-2:40pm *"Signatures and mechanisms of low-dimensional neural predictive manifolds"*
Stefano Recanatesi, UW Physiology & Biophysics
- 2:40-3:00pm *"From the wet lab to the web lab"*
Anisha Keshavan, UW Speech and Hearing Sciences & eScience Institute
- 3:00-3:20pm Break
- 3:20-3:50pm *"Distributed correlates of visually-guided behavior across the mouse brain"*
Nick Steinmetz, UW Biological Structure
- 3:50-4:40pm *"Whiskers as tactile & flow sensors: linking neuroscience, mechanics, and robotics"*
Keynote Lecture: Mitra Hartmann, Northwestern University
- 4:40-6:10pm Reception in HUB 332 (across the hall)